



PROFILING WITH COLORMUNKI™ DISPLAY

INTRODUCTION

The ability to preview accurate color on your display can save a considerable amount of time and money for anyone in the photo and printing industry. Photographers and designers who need to adjust images find that a color-calibrated monitor is essential for previewing edits. To ensure that colors you see on screen are the same colors from your file, you simply need to calibrate and profile your monitor. ColorMunki makes it easy.

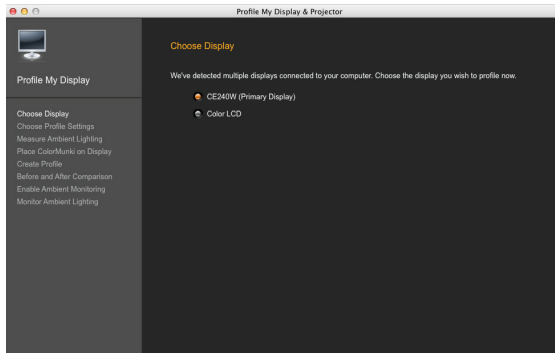
This document will take you through ColorMunki's Advanced profiling wizard to calibrate and profile your display using the ColorMunki Display spectrophotometer.

PROFILING YOUR DISPLAY

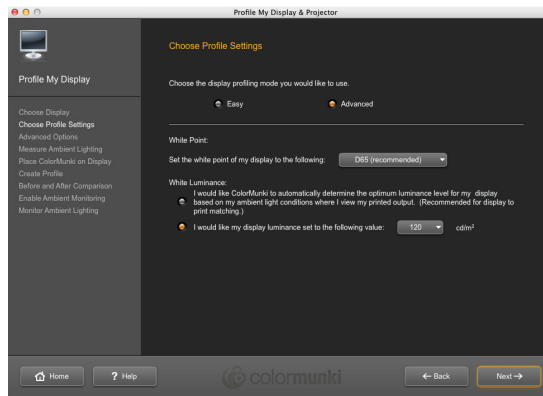
1. With the ColorMunki Display device connected to your computer, launch the ColorMunki software.



2. ColorMunki will detect all displays connected to your computer. Choose one to profile.



2. i1Profiler allows you to profile your display using “Easy” and “Advanced” user modes.



- “Easy” mode uses your current display hardware settings for brightness and contrast to achieve a fixed target white point of D65 and a fixed white luminance level of 120 cd/m², plus enables the Ambient Light Smart Control feature. This mode is sufficient for those who are new to display profiling because it is simple and achieves accurate results in most environments.
- “Advanced” mode offers customization of the display luminance level and the white point of your display. In addition, it also offers selection of Ambient Light Smart Control and Flare Correct™ features.

Select the **Advanced** profiling mode for this tutorial.

3. The White Point selection determines the color of white used for your display. For most applications we recommend **D65**.

Selection of a white point is typically based on your workflow, the type of lighting used to view prints in comparison to your display, and paper stock you use when printing. Here is a little more information.

- D65 is recommended for most photography applications.

NEED TO KNOW

PROFILING WITH COLORMUNKI™ DISPLAY

- D50 is recommended for most pre-press and proofing applications.
 - Native will not make any adjustments to the current white point of your display. You would typically use the Native setting if you have already set your display to the desired white point (and luminance value) using your display's hardware controls.
3. Under “White Luminance,” if you work in a setting where the ambient light doesn't vary much, you can allow ColorMunki to automatically determine the optimum luminance for the display based on the ambient light conditions. If you have lots of windows in your office or are calibrating a laptop that will be used under many different lighting conditions, select **120 cd/m²**.

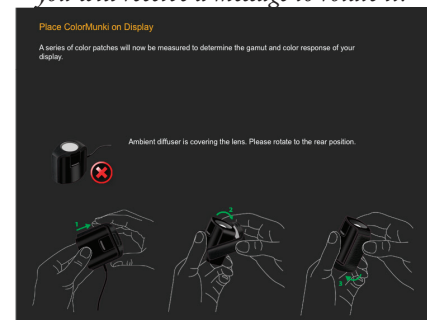
Click **Next**.

4. Advanced options offers “Ambient Light Smart Control” and “Flare Correct™.”
 - Ambient Light Smart Control measures your ambient light and compensates for changes after the profile is set.
 - Flare Correct™ measures the display surface glare and adjusts the profile to correct for it.
5. Place your ColorMunki on the display. Hang the USB cable and weight behind it to balance the device. When the lens is lying flat on the surface, click **Next** to begin measuring.

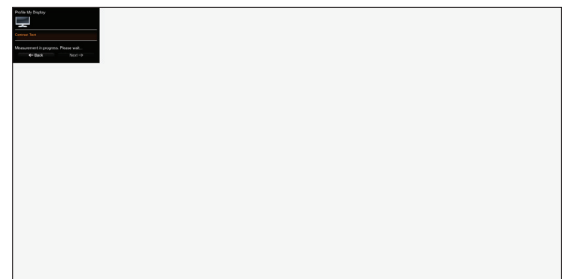


IMPORTANT

If the ambient diffuser is covering the lens, you will receive a message to rotate it.



6. A series of colors will flash on screen, and the ColorMunki device will measure them. After the software takes its readings, choose **Next**.



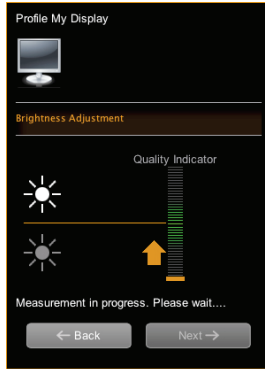
7. An on-screen gauge helps you go through the adjustment needed for your monitor. If you're using an Apple display, this adjustment is not available. If your monitor has contrast adjustments and the reading is outside of the desired area, adjust it until the black bar falls in the green tolerance range.

- If you have a ADC (Automatic Display Control) capable monitor, the ColorMunki software will take control and adjust the contrast and brightness without needing your input. You will know this is the case if the software starts and begins taking measurements without presenting a “Next” button. The software will adjust contrast and brightness, then create the profile automatically.

NEED TO KNOW

PROFILING WITH COLORMUNKI™ DISPLAY

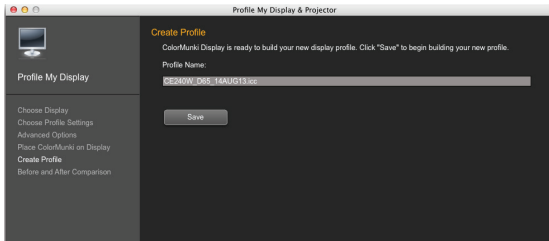
7. If your monitor is not recognized as having DDC capability, a brightness measurement will follow the contrast adjustment screen. After a few initial measurements, the “Brightness Adjustment” gauge will appear. At this point, simply adjust your monitor brightness up or down as necessary until the orange bar is as centered as possible in the green tolerance range.



Hot Tip

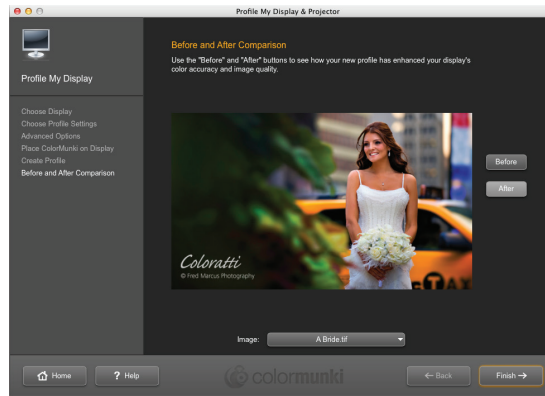
If you have an Apple display, the brightness controls are typically on the right edge of the monitor, and Apple laptops have keyboard brightness controls. If your monitor has brightness adjustment knobs or brightness is adjusted with an On Screen Display, make adjustments here until you are in tolerance.

8. When the measurement process is complete, you will be prompted to name your profile. You can leave it at the default, or add more descriptive information such as the date. Click **Save** to begin building the profile.



9. A green check mark will indicate when your profile is complete. If you'd like, you can choose a frequency to be reminded to re-profile. The frequency is up to you, but those who print color-critical images, such as photos or corporate colors, should profile at least weekly. Click **Next**.

11. ColorMunki software offers the ability to see a before and after comparison. Select an image from the drop-down and click **Before** and **After** to see the change the new monitor profile has made.



12. Click **Finish**. The next time you profile your monitor, the new profile will write over the old one.

