

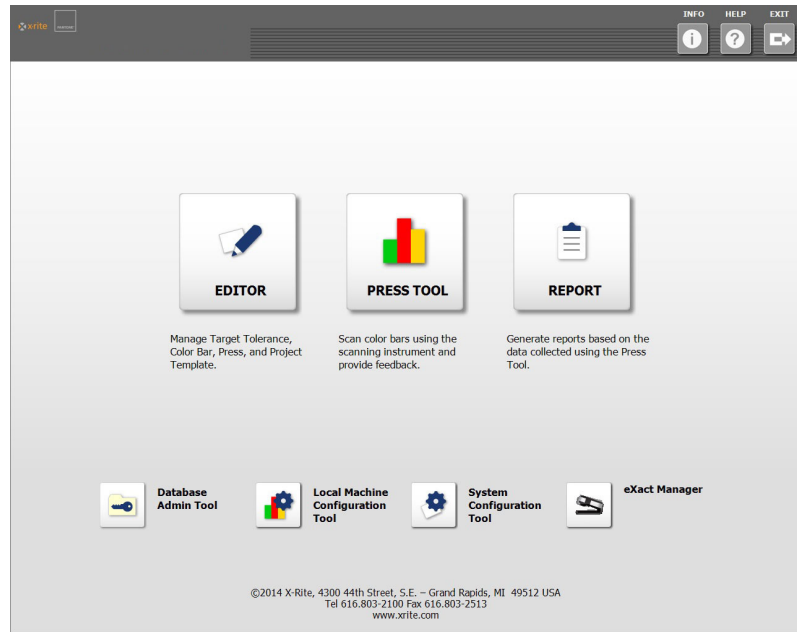
eXact InkKeyControl Software User Guide

ABOUT THIS GUIDE

This book includes 7 step-by-step procedures that will help you easily get up and running with your new InkKeyControl. Inside you will find instructions on how to use the tools within the software, including screen images to help you find what you are looking for.

FOR MORE INFORMATION

Additional instructions on how to use eXact, including calibration and measuring a spot color, can be found in the eXact User Guide.

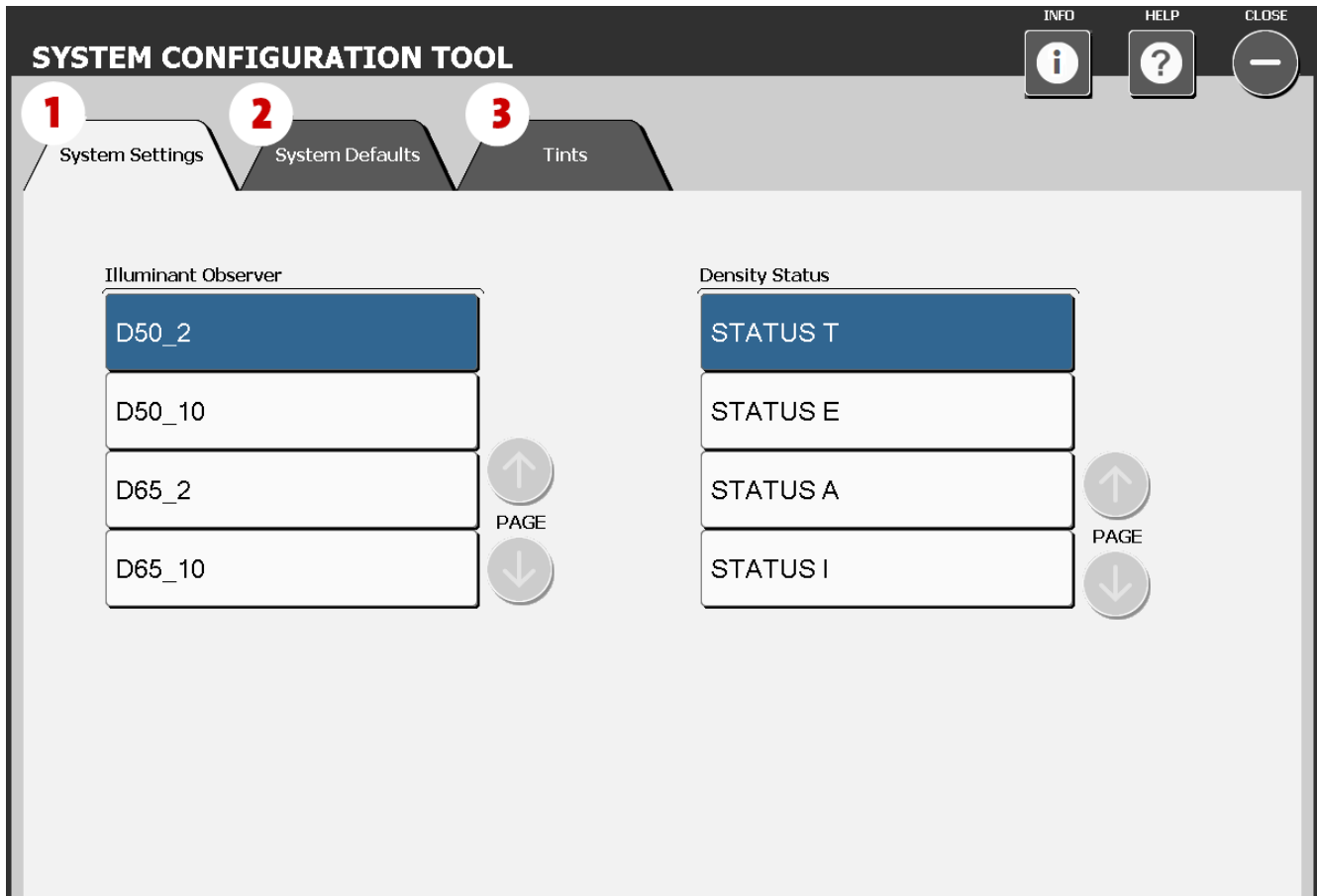


What's Included:

- **System Configuration Tool**
Check and customize the default system settings
- **Editor: Press**
Set up system with your press
- **Editor: Target**
Create a new paper or ink target
- **Editor: Color Bar**
Create and edit a color bar
- **Editor: Project Template**
Create a project template to use later in a job
- **Press Tool**
Create a new job and scan a press sheet
- **Report**
Generate reports based on data collected
- **Local Machine Configuration Tool**
Check and customize the default configuration

eXact InkKeyControl Software User Guide

Step 1: System Configuration Tool



This window is for setting up your system settings, defaults and tints. Defaults are listed below in parenthesis, make any edits as needed by selecting the correct tab to fit your company's standards.

- 1. System Settings:** Select the Illuminant Observer (D50_2) and the Density Status (Status T).
- 2. System Defaults:** Define the default tolerance values for targets: Density (.05, .10), Tints (.05, .10), DeltaE (2, 4), Gray Balance (.05, .10, Range: .10), Grayness (3, 6), Print Contrast (2.5, 5), Dot Gain (1.5, 3), Trap (3, 5), Hue Error (2, 4), Brightness (2, 4).
- 3. Tints:** Select the number of tints (3) and their percentage value (25, 50, 75) and the gray balance of the tints (Highlight: 25, 19, 19, Midtone: 50, 40, 40, Shadow: 75, 66, 66).

eXact InkKeyControl Software User Guide

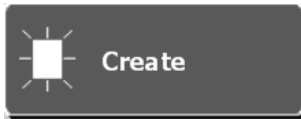
Step 2: Editor- Press



1. Select Press.



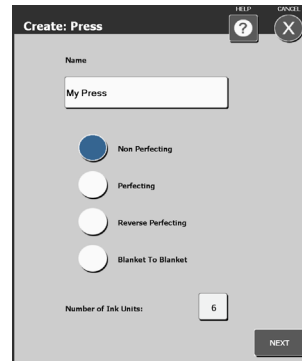
2. Select Create.



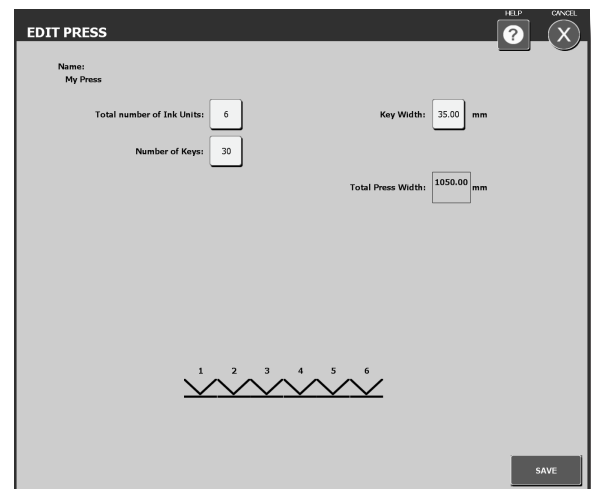
3. Enter a name for the press.



4. Select the type of press and how many ink units.



5. Edit press to specifications.



eXact InkKeyControl Software User Guide

Step 3: Editor- Targets



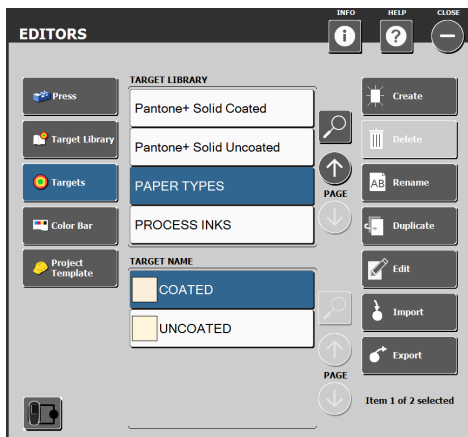
1. Select the eXact button at the bottom of the Editors window and connect the instrument.



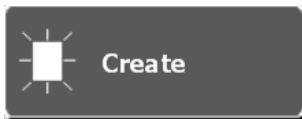
2. Select Targets.



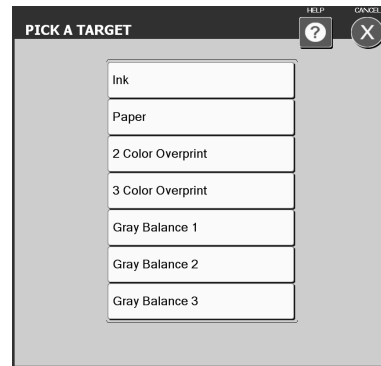
3. Select the Target Library for which you wish to create a target.



4. Select Create.



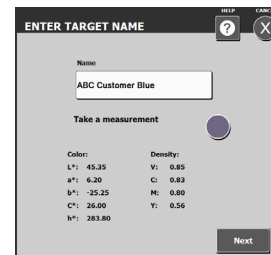
5. Choose a Target from the list. This can be a paper, ink, or combination of inks.



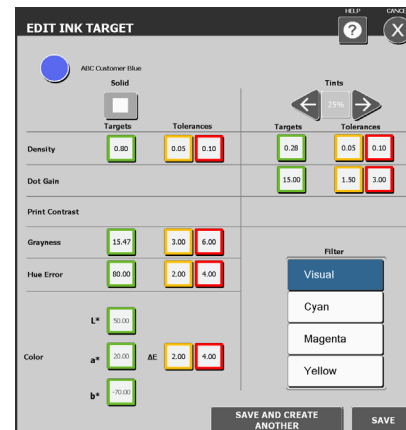
6. Create a name for the Target.



7. Take a spot measurement for the ink Target.



8. Edit the tolerances for the Target.



eXact InkKeyControl Software User Guide

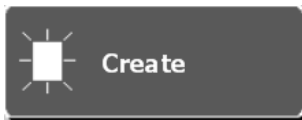
Step 4: Editor- Color Bar



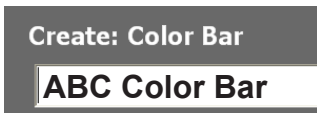
1. Select Color Bar.



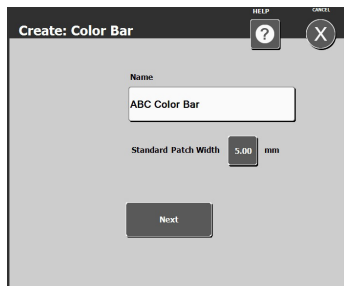
2. Select Create.



3. Create a name for the Color Bar.



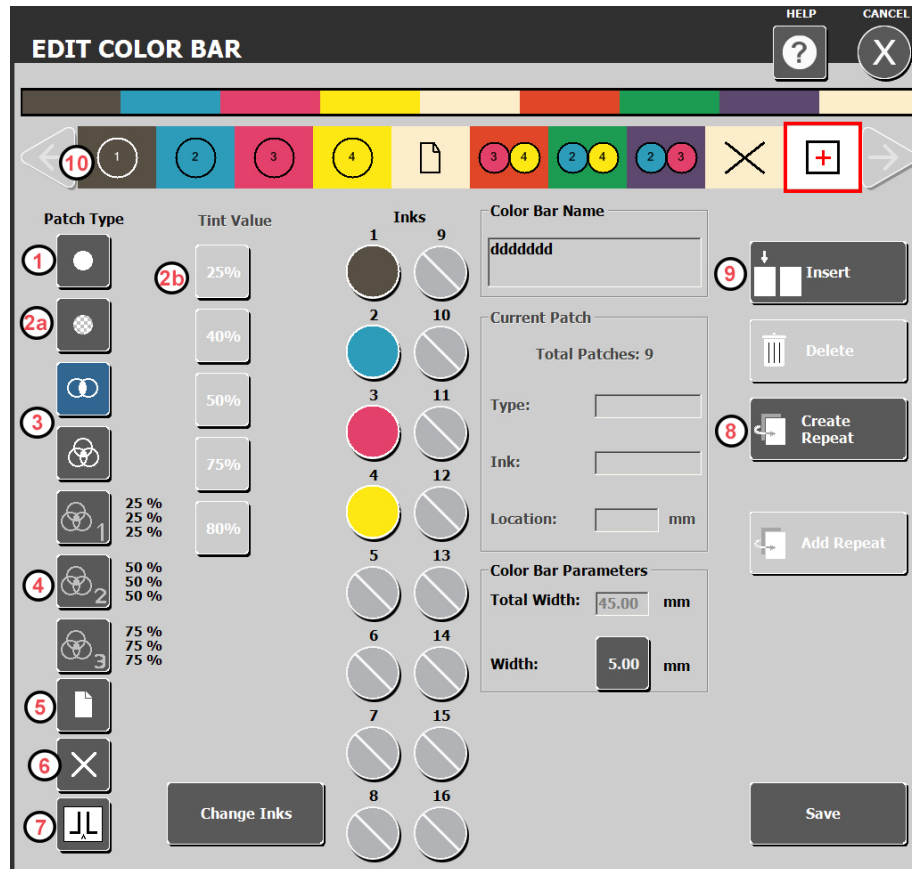
4. Type in the color bar standard patch width and select Next.




5. Begin creating your color bar. See the next page for more detail.

eXact InkKeyControl Software User Guide

Step 5: Editor- Color Bar



To start your color bar, select a patch type from the list, then select an ink and the patch will appear on the color bar. Continue until your color bar is complete.

1. Solid ink patch
- 2a. Tint patch
- 2b. After selecting a tint patch, select the tint value.
3. Two color overprint and three color overprint for red, green blue and 3-color black
4. 3-color gray balance tints (25%, 50%, 75%)
5. Paper patch
6. Slur/skip patch to be used for slurs or other patches that will not be measured.
7. Break will insert a location where one color bar section ends and another section begins. This condition is found when running “nested” color bars.
8. Create Repeat button allows you to create a repeat of your finished pattern.
 - Click Create Repeat.
 - Select the first patch and then the last patch within the range.
 - Click the + patch on the color bar. 
 - Click Add Repeat as many times as necessary to fit across the press sheet.
9. Insert will insert a slur/skip patch to the left of a patch that you have selected within the color bar.
10. View of the color bar as it is being built to check for misplaced patches.

eXact InkKeyControl Software User Guide

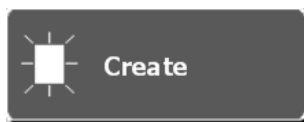
Step 6: Editor- Project Template



1. Select Project Template.



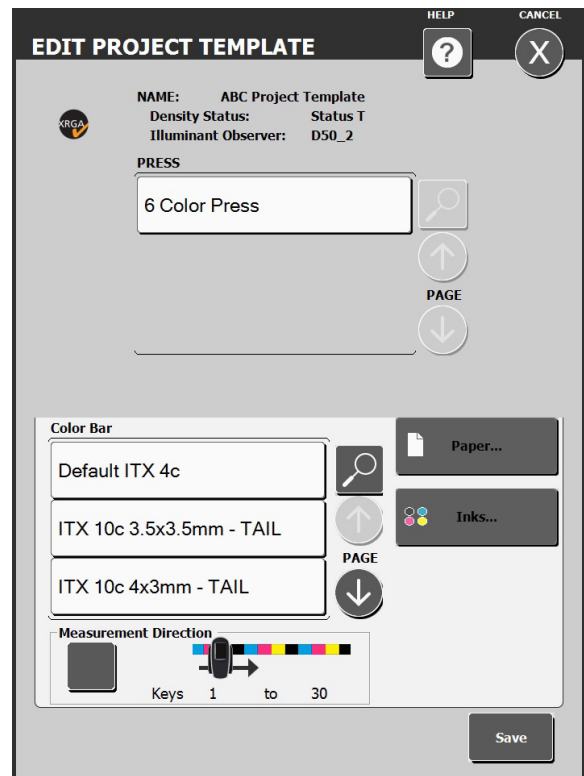
2. Select Create.



3. Create a name for the Project Template.



4. Confirm the name and click Next.



1. Select the press you will be using.
2. Click the Measurement Direction button to set the direction that the color bar will be scanned.
3. Select the color bar that will be used.
4. Click the Paper button to select the Paper Library, and select the paper from that library that will be used.
5. Select the Ink Library and the Inks that will be used.
6. Click Save. If you are missing something, the software will notify you.

eXact InkKeyControl Software User Guide

Step 7: Press Tool



1. Select New Job.



2. Select a Project Template for the job.

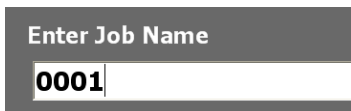
3. Create a new project.



4. Enter a project name.



5. Name the job using the job ticket information.



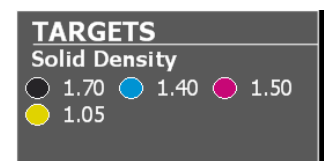
6. Confirm settings.



Select inks for the job,



confirm color bar and flop if necessary,



and adjust target densities.

7. Press the measure button and begin scanning.



Once you have finished with Make Ready, switch to Production Mode.



When you have met your press room standards make OK sheet.



8. Exit when finished.



eXact InkKeyControl Software User Guide

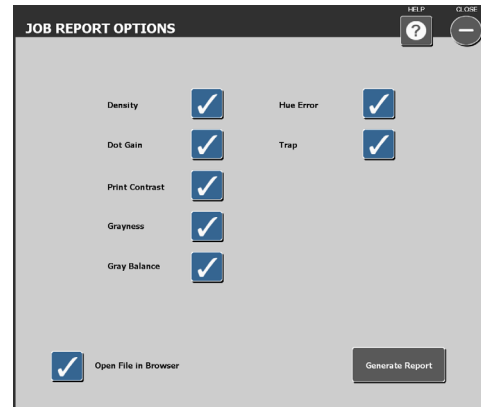
Report



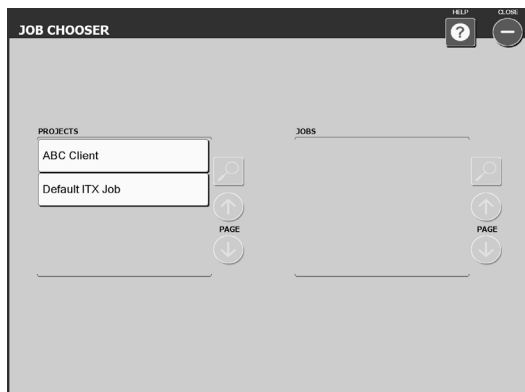
1. Select the type of report.



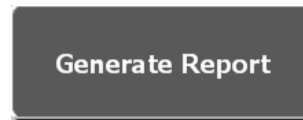
4. Check the items you wish to see data on and un-check those you do not want to report on.



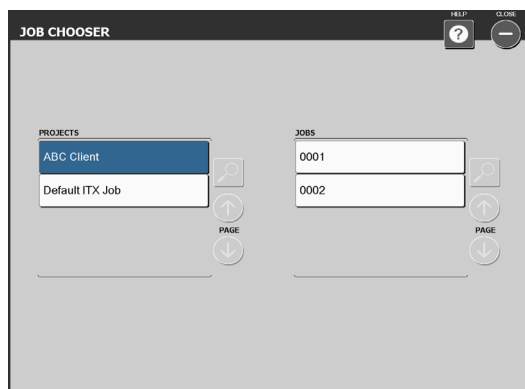
2. Select from the list of projects.



5. Click Generate Report.

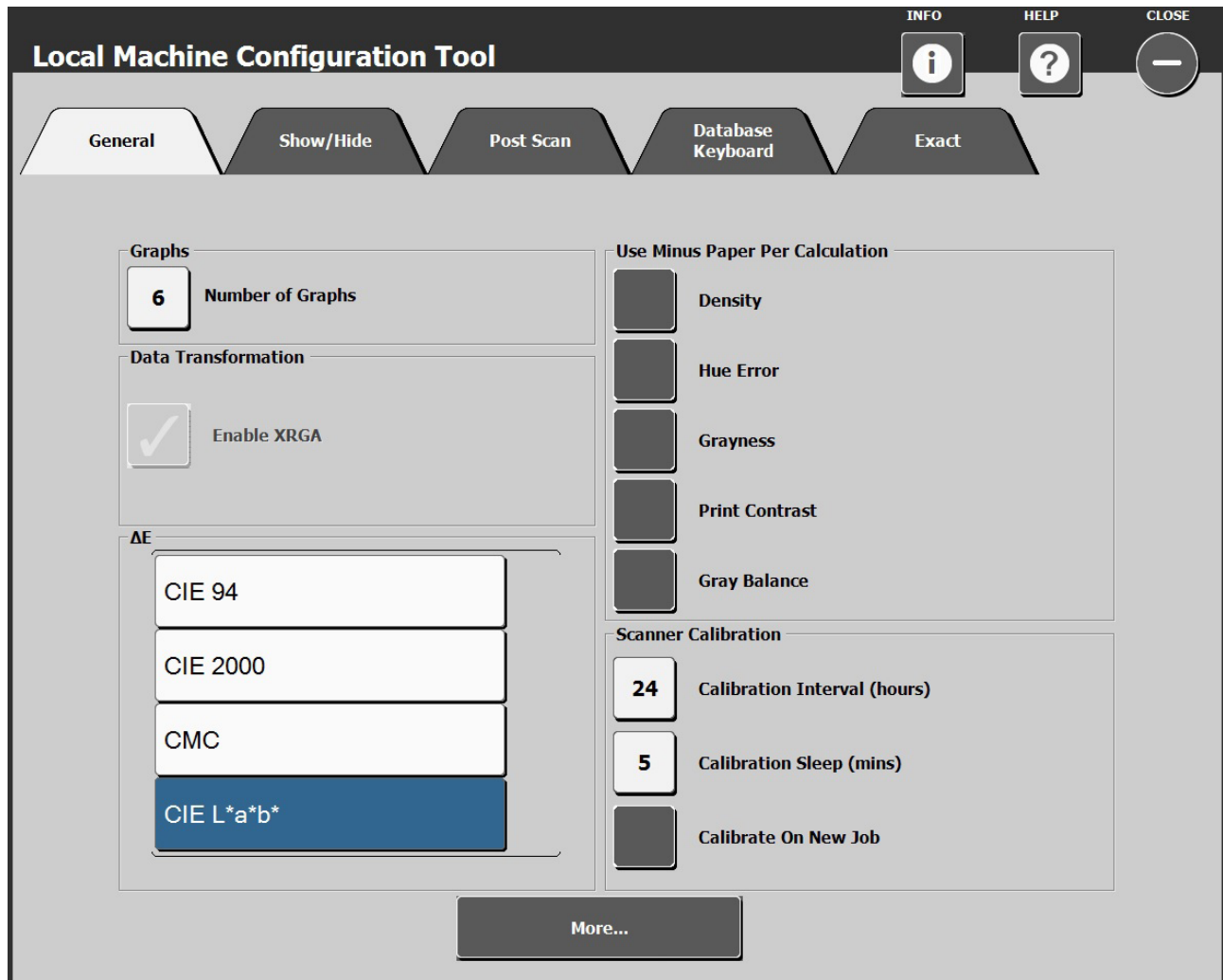


3. Highlight the job you wish to report on.



eXact InkKeyControl Software User Guide

Local Machine Configuration Tool



Local Machine Configuration Tool is used to customize the default settings. The system comes with a good set of defaults, if you wish to make changes, select the tab and make edits as needed.

- 1. General:** Change the number of graphs, when to use minus paper per calculation, calibration intervals.
- 2. Show/Hide:** Choose attributes you wish to show (Density, Hue Error, Grayness, Dot Gain, Trap, etc.).
- 3. Post Scan:** Select from different reported attributes.
- 4. Database Keyboard:** Location and name of the database, and keyboard type.
- 5. eXact:** Instrument connection method and measurement condition.



Corporate Headquarters

X-Rite, Incorporated
4300 44th Street SE
Grand Rapids, Michigan 49512
Phone 1 800 248 9748 or 1 616 803 2100
Fax 1 800 292 4437 or 1 616 803 2705

European Headquarters

X-Rite Europe GmbH
Althardstrasse 70
8105 Regensdorf
Switzerland
Phone (+41) 44 842 24 00
Fax (+41) 44 842 22 22

Asia Pacific Headquarters

X-Rite Asia Pacific Limited
Suite 2801, 28th Floor, AXA Tower
Landmark East, 100 How Ming Street
Kwun Tong, Kowloon, Hong Kong
Phone (852)2568-6283
Fax (852)2885 8610

Please visit www.xrite.com for a local office near you.