

USING RGB PRINTER PROFILES: ADOBE® PHOTOSHOP® CC/CS6



INTRODUCTION

Some inkjet, toner-based, photographic, and other non-PostScript printers print in RGB mode, meaning the RIP or driver is designed to accept RGB rather than CMYK data. This includes Epson®, HP and Canon® inkjet printers that are used with the manufacturer’s provided software driver. If images are sent in CMYK mode, the driver will first convert them to RGB mode and then back to CMYK. Even if the printer prints with CMY, CMYK, CMYKcm (light cyan and light magenta), or some other combination of inks, the printer is still classified as an RGB printer if it is designed to accept RGB data.

To profile an RGB printer, you must first print an RGB test chart with color management profiles turned off, make an RGB profile of the printer, and use this profile to convert your images. This document outlines these steps, plus explains how to use the profile for previewing output color through softproofing, and how to print with ICC profiles. This process is very similar on both Windows® and Macintosh® operating systems.

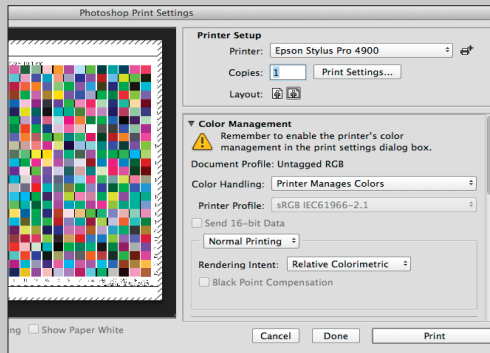


If you are working with Mac® OSX 10.5, make sure to look at the Need-to-Know paper on your specific printer driver for important new settings.

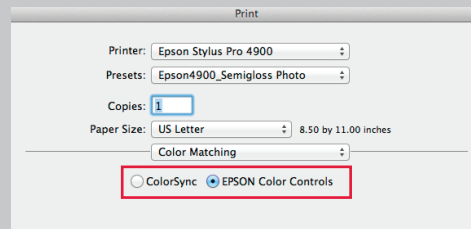
MAKING AN RGB PRINTER PROFILE

1. Use an RGB test chart such as i1 RGB 1.5 (288 color patches), TC 2.88 RGB (288 patches), or TC 9.18 RGB (918 patches). If the printer is non-linear, targets with a larger numbers of patches may produce better results.
2. Open the RGB printer target in Photoshop® without assigning a color profile. To do this, select **Leave as is—Don’t color manage**. The

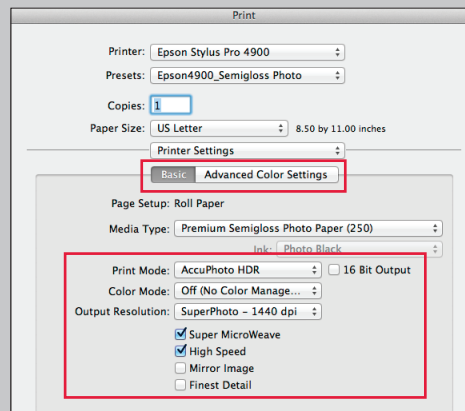
Printing the Test Chart



To profile an RGB-mode printer, select an RGB test chart. Print the chart with NO color management profiles applied. When opening the chart in Photoshop, make sure that there is not a profile assigned. The profile should read “Untagged RGB.” In the Print dialog box, select “No Color Management” in the Color Handling pull-down menu.



When printing the test chart, make sure any color management settings are turned off in the print driver. For example, in the Epson driver’s Color Management dialog box, select “EPSON Color Controls.”



In the print driver’s Print Settings dialog box, select the same options for printing the test chart you use for production.

NEED TO KNOW

USING RGB PRINTER PROFILES: ADOBE® PHOTOSHOP® CC/CS6

image should be labeled “Untagged RGB” in the “Profile Info” window in the lower left corner of Photoshop.

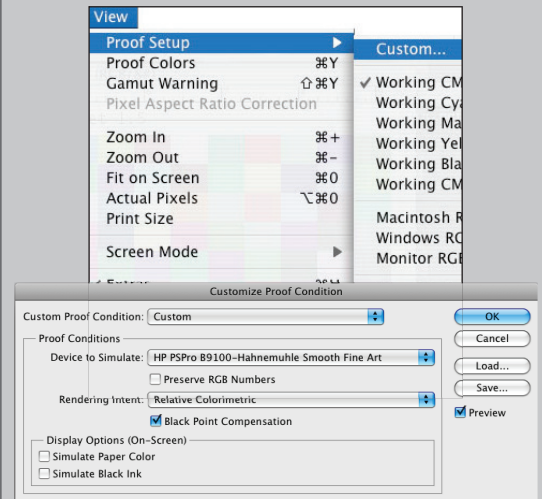
3. Print the target on your RGB printer with the Adobe Print Dialog color management settings turned off. To do this, set “Color Handling” to **No Color Management**.
4. Pay close attention to the manufacturer’s printer driver settings. These settings must be the same settings that will be used when printing files with your profile.
 - The paper or media type you select will determine the amount of ink that is laid down. To determine which paper type to select, start by choosing a media name that is similar to the type of paper that is loaded on the printer.
 - The print quality settings on some printers will be described as resolution; others may simply have names such as “draft,” “normal,” or “best.” When profiling your printer, select the same quality you will use in production.
 - Turn the color management off in the manufacturer’s print driver. Some drivers may use the term “No Color Adjust” or “No Color Management.” In HP’s driver, “Application Managed Color” will disable the driver’s color management.

Hot Tip

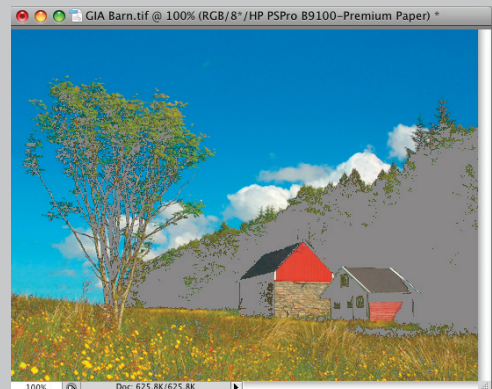
To reduce the chance of selecting the wrong settings later, we recommend saving these settings as a preset in order to use them when printing out of your applications.

5. Read the target with your spectrophotometer and make the ICC profile.
6. Place the ICC profile in the “System > ColorSync Profiles” folder (Mac) or “WINNT\System32\Spool\Drivers\Color” folder (Windows).

Previewing Your Printer’s Gamut



When editing your document in Photoshop, set up the Proof Colors dialog box to preview how your image will print. Use the Gamut Warning to see colors that will be out of the gamut of your printer profile (shown here in gray) and adjust them to be within gamut.



Gamut Warning shows out-of-gamut colors in gray.

USING RGB PRINTER PROFILES: ADOBE® PHOTOSHOP® CC/CS6

NEED TO KNOW

EDITING AND SOFT- PROOFING FILES

Softproofing allows you to see how the color will look on your printer. You will be able to make better editing judgments based on this preview. Adobe® Photoshop® also has gamut warning capabilities that can show you colors that fall outside the printer's capability to print.

1. Calibrate your monitor to the gamma and white point you want to use (we recommend gamma 2.20 and white point 6500 K). The gamma and white point need not necessarily match those of the working space because Photoshop will convert on the fly from the working space profile to your monitor profile. See our "Monitor Profiling" Need To Know for more information about gamma and white point.
2. Edit your images as desired in Photoshop.
3. To check colors and softproof the file before printing, set up Photoshop's soft-proofing using the **View > Proof Setup > Custom** dialog box. Select the RGB printer profile you created. Do not select "Preserve RGB Numbers"! You can select different rendering intents to see their affect on your output. Usually the best choice will be either "Perceptual" or "Relative Colorimetric."
4. When **View > Proof Colors** is selected, Photoshop will display the image as it will appear with the selected printer profile.
5. When **View > Gamut Warning** is turned on, Photoshop will show gray over colors that are out of the printer's gamut. These colors can then be edited (e.g., reduce saturation using selective color correction) to provide a realistic print and avoid artifacts such as rough gradations.

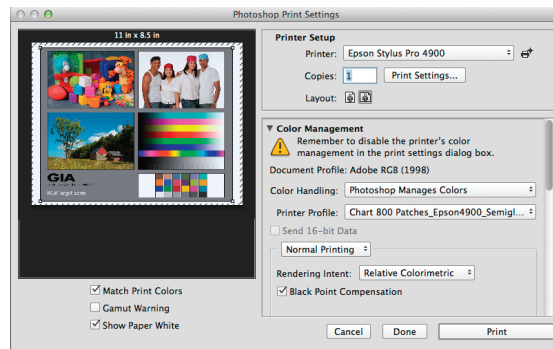
USING YOUR NEW PROFILE

Once you have created your new printer profile, you can use it to print from Adobe Photoshop or another design application.

HOW TO PRINT FROM PHOTOSHOP

If you print from Photoshop, follow these steps to disable color management. When using your profile, be sure to use the same printer driver settings as when you originally printed the profiling target.

1. In the Photoshop "Print" dialog, under "Color Handling," select **Photoshop Manages Colors**.
2. Select the profile you created under "Printer Profile" and choose a Rendering Intent.



3. In Photoshop's "Print" window, click the **Print Settings...** button to change your Print Driver Settings. Use your saved presets or the same settings you set in the "Printer Settings" window when creating your profile. You will want to make sure all color management is still off.
4. Once you have matched your print settings, click **Save** from the Print Driver, then **Print** from Photoshop.

HOW TO PRINT FROM OTHER DESIGN APPLICATIONS

Unlike Photoshop, applications such as Adobe InDesign® will not automatically disable color management in the "Color Matching" window of your print driver. When printing from these

applications utilizing your new custom profile, follow these instructions:

1. Open your file and select **File > Print**.
2. From the “Color Management” tab, set “Color Handling” to **Let application determine colors**. Set the “Printer Profile” to your new custom profile.
3. On the bottom of the dialog box, select **Setup...** in Adobe Illustrator and **Printer...** in Adobe InDesign to set up the print driver.
4. Select the “Layout” pull-down and choose **Color Matching**. This should be set to either of the following depending on your driver: **EPSON Color Controls, In printer**, or **Vender Matching**. Never use ColorSync to manage colors.
5. If you saved your presets when you profiled your printer, use the “Presets” pull-down and select the saved presets for your printer, media type, and print quality.
6. If you did not save your presets, you will want to make sure your settings are the same as before. Set all of the same settings you used when printing your target, including the Paper Type and Quality. Also make sure that “Color Mode” or similar settings are set to **Off (No Color Management)**.
7. After you have made all changes in the application color management window and the printer driver, you can now print your document.

FOR MORE INFORMATION

X-Rite Color Services offers a variety of classroom, on-site, seminar and online training opportunities. These courses are highly interactive and taught using the latest equipment and software. If you would like to learn more about color management or the advanced features of i1Profiler, check out our Color Control Freak eLearning course at:

http://www.xrite.com/top_services.aspx?segmentid=5&eventid=907



Classroom
Training



On-Site
Training



eLearning
Training

For information on a variety classroom, custom on-site, and highly interactive on-line training options, see X-Rite's Color Services web site at http://www.xrite.com/top_services.aspx

Contact us at:

Email: training@xrite.com

Phone: 800.248.9748 x2685