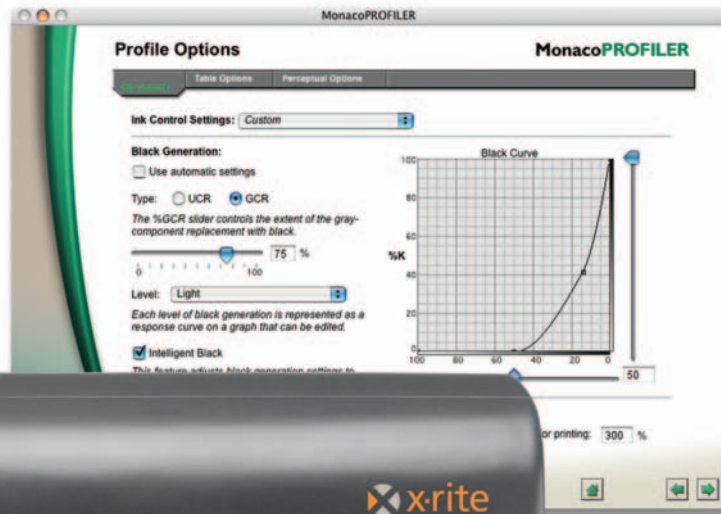


Advanced Color Ensembles

High Speed Solution for Color Proofing and Prepress Workflows



The new Advanced Color Ensembles from X-Rite manages color with precision, speed and accuracy—creating profiles for RGB, CMYK and multichannel output up to eight colors. Designed for ICC profiling and calibration, the system ensures high quality proof-to-press matching for proofing specialists, and provides maximum flexibility and control in creating optimized separations for on-demand printers and prepress professionals. Based on the DTP70 scanning X-Y spectrophotometer and MonacoPROFILER professional profiling software, this tool reads a typical color target in less than three minutes and measures smaller targets for calibrating color proofing systems in just 30 seconds.



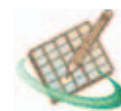
Create ICC profiles for your monitors



Create ICC profiles for your input devices



Create ICC profiles for your output devices



Edit your output profiles



Advanced Color Ensembles

Offering exceptional speed and accuracy, the Advanced Color Ensembles reduces cost and ensures high-quality proof-to-press matching. This comprehensive solution combines the all-new DTP70, high-speed scanning instrument with high-performance MonacoPROFILER software and the award-winning MonacoOPTIX^{XR2}. The result is fast, accurate ICC profiling and calibration throughout the digital workflow.

Simple, powerful software

When it comes to color management tools, ease-of-use features save valuable time and money. The revolutionary MonacoPROFILER (Gold or Platinum) is now enhanced with even greater profiling capabilities to guide you through the profiling process quickly and easily. Its feature-rich capabilities ensure accurate ICC profiles for all components of your digital workflow.

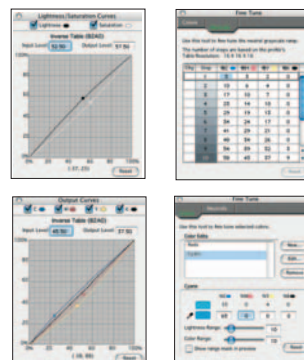
Faster results with the innovative spectrophotometer

The agile DTP70 scanning X-Y spectrophotometer reads a typical ICC color target in less than three minutes and measures smaller targets for calibrating color proofing systems in just 30 seconds. A host of special features, including single-button activation, automatic calibration and a self-alignment function that virtually eliminates read errors, maximizing the system's efficiency.



Expert Black Generation Control

Control the maximum black and total ink. Use presets or customize your own UCR/GCR curves.



Profile Editing

Fine-tune your output profiles using the powerful tools to edit using lightness, saturation and output curves. For the ultimate control, you can make small shifts in color or precise changes in neutrals and user-defined colors within the profile editing space.

Advanced Versatility for Complex Workflows

The Advanced Color Ensembles creates profiles for the full range of processes and devices - proofing systems, scanners, digital cameras, monitors, CTP and imagesetter output, on-screen soft proofs, and virtually any output device. The MonacoPROFILER software's advanced black generation control and powerful profile editor deliver superior results.



DTP70 full-sheet high-speed X-Y scanner

The DTP70 rapidly collects and transmits accurate spectral information to MonacoPROFILER for calibrating your devices and building high-quality ICC profiles.

- Measures typical calibration targets in 30 seconds and profiling targets such as IT8 in less than three minutes
- Measures sheets from 3.5 inches to 8.86 inches wide and media from .003 inches to .014 inches thick
- Self-aligns targets, reducing read errors
- Offers single-button, autoscan operation and automatic calibration based on a built-in reference
- Features user-selectable black or white backer, UV included or UV excluded illumination
- New pattern recognition eliminates the need for separator bars or high-contrast patches



MonacoPROFILER (Gold or Platinum) with MonacoOPTIX PRO software

This new software release includes quality enhancements, new target support and an improved profile building engine. The award-winning MonacoOPTIX PRO software has been fully integrated also.

- Create superior ICC profiles, including ICC version 4.1, for scanners, CRT and flat-panel monitors and RGB and CMYK printers
- Profile multi-ink (5- to 8-color) output devices (Platinum edition only)
- Control ink limiting and black generation
- Gain expert editing control over output profiles using lightness, saturation, and curves
- Print and measure IT8.7/3, IT8.7/4, and ECI2002 targets
- Import CGATS-formatted measurement data files
- Profile your digital camera using the GretagMacbeth Digital ColorChecker SG target (Platinum edition only)
- Take advantage of cross-platform patch generation capabilities
- Create accurate monitor profiles with adjustable white point, brightness, and contrast settings (adaptive brightness setting available for flat-panel displays)
- Validate the accuracy of your monitor profiles and identify out-of-gamut colors before they cause problems
- Ensure the widest possible tonal range with hardware-assisted monitor brightness and contrast adjustment
- Take advantage of optional table-based monitor profiling
- Track your monitor's accuracy over time using the drift trending feature
- Establish a monitor profiling schedule for your entire workgroup
- Use Calibration Curve Editing to fine-tune the display's balance and white point for maximum efficiency
- Use Advanced Mode for on-screen display testing, black bias control and calibration to target value



MonacoOPTIX^{XR2} Colorimeter (Optional)

Our precision colorimeter is designed to simulate the human eye. Hardware-assisted brightness and contrast adjustment ensures the widest tonal range and largest color gamut possible for your display.

- Glass cover over lens for accuracy and proportion provides a robust surface that is easy to clean and prevents scratching
- Creates ICC profiles for CRT and LCD panels
- Set hardware white points with measurement device
- Adaptive brightness setting for LCD displays provides accurate color in any viewing environment
- Profile reminder application can establish a profiling schedule for your entire workgroup
- Multiple monitor calibration calibrates multiple displays connected to the same workstation quickly and easily

Expanded Functionality

The new Advanced Color Ensembles from X-Rite provides high-speed, innovative, and more streamlined color management solutions to help you meet standards and tight deadlines. X-Rite's intuitive and powerful software guides you carefully through the profiling process. And, the DTP70's single-button activation, automatic calibration, reversible backer, and switchable UV filter ensure optimal results.

Components

DTP70 scanning X-Y spectrophotometer

USB interface cable, universal power adapter: 100-240 VAC, 50-60 Hz; 30W

User-switchable UV included/excluded filter.

User-switchable black or white sample backer tray

Software

Macintosh®
*Power Macintosh or better
OSX 10.2 or later
Any color monitor
with 24-bit display board
180 MB application RAM
100 MB free disk space
USB port*

Windows®
*Pentium® PC or better
Windows 2000 or XP
Any color monitor
with 24-bit display
(with LUT support)
Memory: 128 MB
application RAM
100 MB free disk space
USB port*

Dimensions

DTP70 spectrophotometer
*Height: 150mm (5.9 inches)
Width: 315mm (12.4 in)
Depth: 193mm (7.6 in)
Weight: 3320g (7.32 lbs)*

Functional Performance Specifications

Measuring geometry:

Reflection 45°/0° per ANSI/ISO 5-4 (IT2.17)

Spot size at sample:
3.2mm diameter

Light source:
Gas pressure @ 2850°K

Spectral sensor:
FAST technology, 16-point engine, 31-point reporting

Spectral range:

400nm to 700nm

Illuminant types:

A, C, D50, D65, D75, F2, F7, F11, F12

Standard observers:
2° and 10°

Density responses:
Status T, E, I, A, Spectral, HiFi, Hexachrome

Measurement speed:
100 measurements per second

IT8 7/3: 2.5 minutes

EI: 4.2 minutes

IT8 7/4: 4.5 minutes

Reflection measurement:

Inter-instrument agreement
.3 DE 94 average
.5 DE 94 maximum
(based on DTP70 standards for 12 BCRA tiles)

Measurement range:

0.00D to 2.50D; 0 to 160% R (reflection)

Repeatability on white:

0.2DE max.; +/- 0.01D max.

Linearity:

+/- .02D or 2%, 0 to 2.5D

Media thickness:

0.08mm (0.003 in) to 0.36mm (.014 in)

Data interface:

USB 2.0 full-speed peripheral device

Calibration:

Internal calibration reference provided

Environmental:

+10° (50° F) to +35°C (95°F)
operating 0% to 85% RH
non-condensing

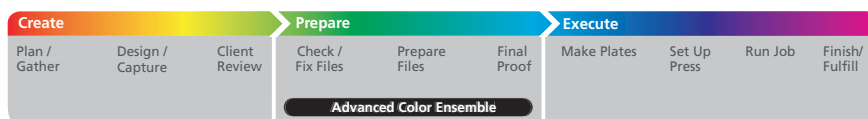
Warm-up time:

None

This product is covered by U.S. and foreign patents and patents pending. Specifications and design subject to change without notice.

Streamlined Color Management™ – Graphic Arts Workflow by X-Rite

X-Rite delivers complete global color management systems, including instruments, software and support. Our solutions can help improve the entire workflow process from design to execution.



Visit xrite.com for more information