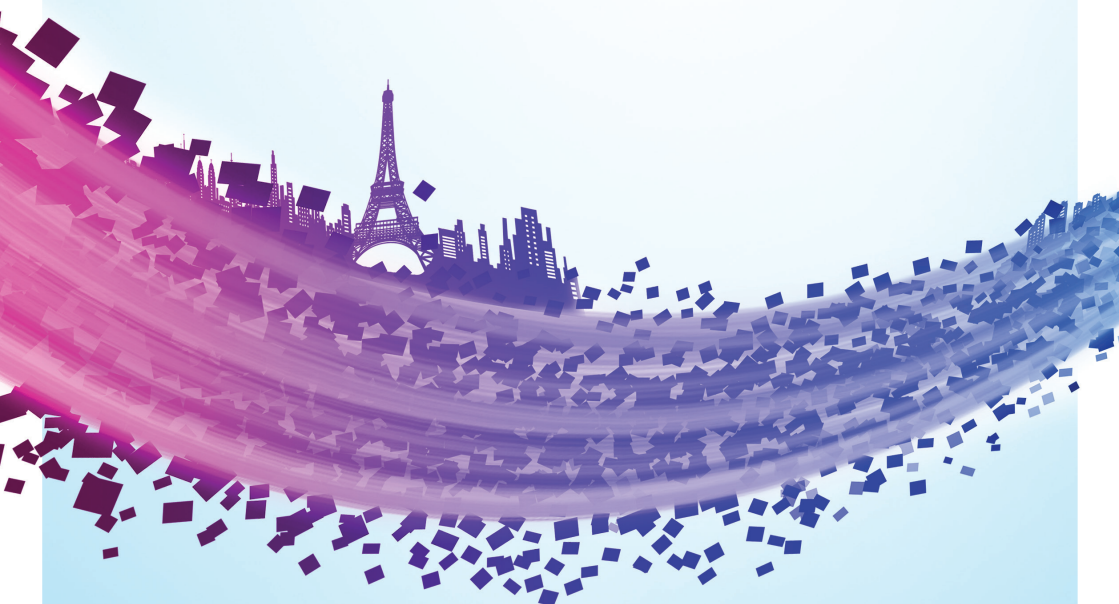
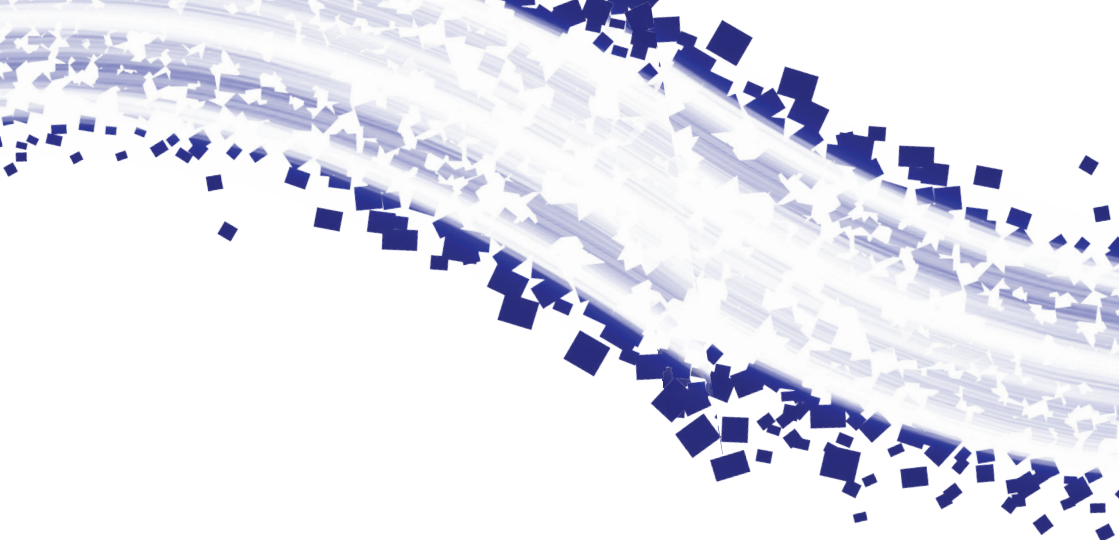


 x-rite
PANTONE®

YOUR COLOR RESOURCE
for All Your Global Communication Needs.



YOUR COLOR.
ALWAYS IN HARMONY.



Consistent color means improved productivity,

less waste, and a **higher quality** end product across the supply chain. From **inspiration to production**, from design to shelf, there are many variables that affect color of the final product. A color network must work flawlessly to ensure color integrity and fastest time to market **throughout the entire process.**



WHEN IT COMES TO COLOR THERE IS ONLY ONE PARTNER....

X-Rite Pantone has more than 150 collective years of experience in defining, specifying, measuring and managing accurate color — right the first time, right all the time. We offer a full set of color solutions and consulting services that safeguard brand integrity, improve time to market, minimize waste and ensure full delivery of design intent from conception to shelf.

Whether you are a brand owner, designer, printer, converter or premedia house, we have solutions that allow you to accurately specify and manage color from start to finish regardless of your preferred substrate — paper, recycled board, textiles, plastics, foils and more.

Partnering with X-Rite and Pantone ensures increased simplicity of color management, better control of bottom-line costs and opportunities for top-line growth.

BRAND OWNERS/ CREATIVES

ACCURATE COLOR: From Concept to Consumer

Whether you are a brand owner, an in-house designer or a freelancer, you can leverage our vast color knowledge, expertise and our easy-to-use solutions to ensure brand integrity and accurate color from inspiration to output — from your desktop, laptop, iPhone or iPad. What could be easier?





PantoneLIVE™

The PantoneLIVE team works with your color palette to define, develop and deploy color specifications into the cloud, based on your specific substrates, print processes, inks and application methods. Brand integrity and design intent are assured across a variety of print surfaces, production processes, departments and geographies.

PantoneLIVE ColorBook and Viewer connects designers to the PantoneLIVE ecosystem, enabling accurate color selection and viewing. No more surprises: Colors will always match in production!



ColorCert®: X-Rite Edition

Ensuring accurate, consistent color across a complex global supply chain just got easier. An intuitive dashboard presents supplier scorecards for monitoring the production process and comparing supplier performance. Use ColorCert Master to incorporate PantoneLIVE™ standards into color specifications. Real-time monitoring.

i1 Professional Color Management Solutions

i1 Professional Color Management Solutions provide the ultimate tools to ensure that your cameras, display monitors, projectors and wide format printers produce accurate color ... right the first time, right every time. Creatives strive to achieve perfect color, and the i1Pro 2 spectrophotometer incorporates the latest technology and optical systems, delivering unrivaled color for designers. The i1Pro 2 supports device link profiles for optimal color mapping.



PANTONE® Capsure™

CAPSURE goes where you go. CAPSURE **matches your color inspiration** to more than 10,000 PANTONE Colors. Its **advanced optical technology** gets color right — even measuring multiple colors from finely-patterned surfaces. CAPSURE easily exports colors into your design workflow and cross-matches colors for use in print, packaging, web, paints, interiors, plastics, textiles, product development — anywhere your inspiration takes you.



Pantone Color Institute

The Pantone Color Institute provides **color trend forecasting, color insights and customized color consulting**. We help companies make the most informed decisions about color for their brands or products to gain a competitive edge. When 80% of human experience is filtered through the eyes, we understand that the choice of color is critical.

Visit us on the web to learn more about advanced color solutions from X-Rite Pantone. www.xrite.com | www.pantone.com

DIGITAL WIDE FORMAT

THE BIG PICTURE

Big signs and displays deserve big, attention-getting images in vibrant, eye-catching colors. But at the same time, you want to ensure that the color is right and that ink and media costs are in line. Color tools from X-Rite Pantone are the answer.

PANTONE Color Guides and Books

For decades, brand owners, design professionals, printers and converters have depended on Pantone to accurately communicate color. Now the PANTONE PLUS SERIES update to the popular PANTONE MATCHING SYSTEM® **inspires your design work** and enables you to design and communicate color for **all your multimedia needs**. From print to web design, animation and video, the PANTONE PLUS SERIES allows you to ensure that your creative vision becomes reality.



i1 Professional Color Management Solutions

Communicating color easily, accurately and often is critical to business success in the sign and display graphics business. And there are so many platforms to communicate from! With X-Rite's i1 Professional Color Management Solutions, use your camera, display monitor, projector or 4- to 6-color wide format printer to **communicate color right ... the first time, every time**. Exceeds customer expectations, differentiate yourself in the market and save time and money on ink and media. It's truly a win/win proposition.



Color Services

Bring X-Rite Pantone's more than 150 collective years of experience in defining, specifying, **measuring and managing accurate color to your operation with training tailored to your specific needs**. Your team will expand horizons beyond simply using color profiles, allowing you to **introduce color efficiencies** that drive cost out of your business and provide you with the latest industry knowledge.

Big opportunities deserve the big difference that color training and consulting will deliver to you and your customers. Take your business to the leading edge of color with our tailored training services.



... and More

Visit us on the web to learn more about advanced color solutions from X-Rite Pantone.

www.xrite.com | www.pantone.com

- **PANTONE COLOR MANAGER:** Transfer brand palettes from PantoneLIVE, ColorMunki and Capsure into Adobe® Creative Suite® and other leading software solutions for accurate communication and implementation of color.
- **PANTONE PLUS SERIES:** Communicate color from the beginning of the process for all your multimedia needs — print, packaging, web, animation and video.
- **PANTONE Lighting Indicator Stickers:** Tired of working in the dark? Take the guesswork out of matching colors under different lighting conditions.
- **i1 Publish Pro 2:** The software and targets you need for color accurate cameras, monitors, projectors, printers, presses — you name it.
- **PANTONE CAPSURE:** Matches your color inspiration to more than 10,000 PANTONE Colors.
- **i1iO:** Extend the power of your i1Pro 2 with this automated hands-free test chart reader.



COMMERCIAL PRINTERS

DELIVER ON CUSTOMER EXPECTATIONS While Improving Your Bottom Line!

Last minute changes can be the bane of your existence — but they are a reality in the life of most commercial printers. Advanced production monitoring and control solutions from X-Rite Pantone can alleviate some of that pain, allowing you to meet customer expectations without breaking the bank.

i1 Professional Color Management Solutions

Manage color across an array of print technologies.

Runs shorter than expected? No problem — move the job to digital. Need to match digital, offset and/or inkjet print within the same project? It's easy. Use our i1 Professional Color Management Solutions to **ensure color consistency** across your business and get the most out of your investments.



X-Rite eXact™

Looking for exact color? That's where X-Rite eXact comes in. Our **point-in-time handheld solutions** are the industry standard. Step up to the next generation and benefit from easy-to-use technology that gets to the right color quickly . . . right the first time, right every time. eXact makes understanding complex industry standards simple and straightforward, giving your production managers the best information, and saving money and time. Our new touch screen technology allows you to **measure and communicate color accurately** with a single click. With NetProfiler software, measure, manage and monitor your color accuracy from different departments or geographies.

What could be easier — or more eXact — than that?



ColorCert®: X-Rite Edition

ColorCert is a cloud-based standards-compliant solution that closes the loop for **exceptional color management**, from customer file all the way through production. ColorCert delivers statistical process control for defining, monitoring and communicating production quality, across the plant or around the globe. **ColorCert helps manage waste** across sites by helping create consistency across your business.



IntelliTrax/EasyTrax

These **state-of-the-art press-side automation solutions** allow your press operators to deliver the highest level of consistency during expensive production runs. **Take the guesswork out of color management** with automated press-side color controls, driving costs out and bringing a higher level of quality to your work.

. . . and More

Visit us on the web to learn more about advanced color solutions from X-Rite Pantone.
www.xrite.com | www.pantone.com

- **InkFormulation:** Minimize ink inventory and easily reuse leftover inks.
- **PANTONE PLUS SERIES:** Communicate color from the beginning of the process for all your multimedia needs — print, packaging, web, animation and video.
- **PANTONE Lighting Indicator Stickers:** Tired of working in the dark? Take the guesswork out of matching colors under different lighting conditions.
- **i1Publish Pro 2:** The software and targets you need for color accurate cameras, monitors, projectors, printers, presses — you name it.



CONVERTERS

CONVERT PACKAGING Challenges into Tighter Customer Relationships

X-Rite Pantone is committed to making your life easier as a labels or packaging converter. Let us help you lower quality control costs, reduce time to market, take guesswork out of color and unify your color communications across your entire color network and the packaging supply chain.

PantoneLIVE

When it is time for production, connect to PantoneLIVE, a secure **cloud-based database** that ensures precise color at the point of production.

Precise spectral definitions for each color are organized in a secure, cloud-based ecosystem, provide the right formulations for production and **consistent color on a multitude of substrates and print technologies.**

Right the first time. Right all the time.

X-Rite eXact with Scan Option

Our **point-in-time handheld solutions** are the industry standard. Step up to the next generation and benefit from easy-to-use technology that gets you to the right color quickly. eXact makes understanding complex industry standards simple, giving your production managers the best information, saving costs and time. With eXact, you can **be assured of eXact color** regardless of where you are in the production process.



NetProfiler software allows you to verify, optimize, and certify the performance of your color measurement devices. Within a complex packaging supply chain and a broad color network that encompasses multiple departments and geographies, NetProfiler enables the digitization of workflows by reducing variances between measurement devices caused by age, wear, or environment. This ensures accurate and reliable color measurement. Used with our eXact platform and its new touch screen technology, you can **measure and communicate accurate color in a single click.**

With the eXact Scan Option, extend the ability to quickly read conventional, custom and non-continuous strips on all size packaging applications, up to 44". With scanning you can breathe new life into older presses not equipped with in-line color measurement.

What could be easier — or more eXact — than that?



Ci6x

Need to measure metallic or reflective surfaces?

Then the next-generation X-Rite Ci6x sphere spectrophotometer is the right solution. The X-Rite Ci6x provides the industry's most effective means of measuring color on reflective or uneven surfaces for packaging or other printed materials. Combined with X-Rite NetProfiler 3.0, the Ci6x also provides a complete track and trace process for consistent measurements across multiple devices and locations.



... and More

Visit us on the web to learn more about how X-Rite Pantone can revolutionize your business in these dynamic times. www.xrite.com | www.pantone.com



INK SUPPLIERS

PRECISE COLOR: From Concept to Ink Kitchen

Reduced inventory. Faster time to formulation. Better raw materials management. Delivery of precise ink formulations to customers.. X-Rite Pantone solutions address all of these challenges for ink suppliers.



PantoneLIVE

Better manage raw materials and meet supplier requirements. **Link in to our secure cloud-based spectral database** and you will be able to create the right ink formulation from step one, regardless of color complexity. Taking advantage of PantoneLIVE means **error-free ink formulation**, happier printers and converters and delighted brand owners.

Right the first time. Right every time.

X-Rite eXact

This **state-of-the-art color measurement tool** allows ink suppliers to measure materials prior to delivery, ensuring quality and color accuracy, regardless of the technology or substrate being employed. **It's an ink manufacturer's dream!**

NetProfiler software allows you to **measure, manage and monitor your color formulations** from different geographies, critical in a complex supply chain and a broad color network. Used with our eXact platform and its new touch screen technology, you can measure and communicate accurate color in a single click.

What could be easier — or more eXact — than that?



InkFormulation

Accurately and consistently create, store and approve custom tailored inks without worrying about the effects of variations in substrates and printing processes. Our InkFormulation solution is compliant with CxF, an ISO standard for print production, ensuring consistency with the added benefit of quality reporting. **Your business will run more cost-effectively and productively.** We guarantee it!

InkFormulation and ColorCert Ink Room are PantoneLIVE enabled. This makes it fast and easy to ensure ink integrity prior to production, saving time and reducing waste.

Visit us on the web to learn more about solutions for ink suppliers.
www.xrite.com | www.pantone.com

FROM INSPIRATION TO PRODUCT



DIGITAL WIDE FORMAT

- ColorChecker Passport
- ColorMunki Family
- i1 Color Management Solutions
- Munsell Color Vision Tests
- Optical Brightener Kit
- PANTONE Capsure
- PANTONE Color Manager
- PANTONE Lighting Indicator
- PANTONE PLUS SERIES

BRAND OWNERS/ CREATIVES

- ColorCert®: X-Rite Edition
- ColorChecker Passport
- ColorMunki Family
- i1 Color Management Solutions
- Munsell Color Vision Tests
- PANTONE Capsure™
- PANTONE Color Manager™
- PANTONE Plastic Chips
- PantoneLIVE™
- Pantone PLUS SERIES

Your Color. Always In Harmony.

X-Rite Pantone.

One Company. One Network.

When it comes to color consistency, you need simple tools for everyone in your color network so you can always **work in harmony from inspiration to production.**

X-Rite Pantone, the **leader in color communications**, offers a full suite of hardware, software, solutions and **services** that specify, communicate and measure color accuracy, ensuring your brand's color integrity across your color network.



INK SUPPLIERS

- Ci6x
- ColorCert: X-Rite Edition
- InkFormulation
- iQC Print
- Munsell Color Vision Tests
- NetProfiler
- PantoneLIVE
- PANTONE PLUS
- X-Rite eXact



COMMERCIAL PRINTERS AND CONVERTERS

- Ci6X
- ColorCert®: X-Rite Edition
- EasyTrax
- i1 Color Management Solutions
- iCPlate 2
- InkFormulation 6
- IntelliTrax
- iQC Print
- Munsell Color Vision Tests
- NetProfiler
- Optical Brightener Kit
- PANTONE Lighting Indicator
- PantoneLIVE
- PANTONE PLUS
- X-Rite eXact™ with Scan
- X-Rite Lighting



Become a PANTONE Certified Printer

PANTONE Certification is the most robust color quality certification process available for commercial printers and converters, and the only certification process that encompasses premedia, the ink room and the press room.

Learn more at

www.pantone.com/certified-printer-program



X-Rite, Inc. - Corporate Headquarters
4300 44th St. SE
Grand Rapids, MI 49512 USA
Phone 800-248-9748 or
616-803-2100
xrite.com

Pantone
590 Commerce Blvd.
Carlstadt, NJ 07072-3098 USA
Phone 201-935-5500
pantone.com

X-Rite is either a registered trademark or trademark of X-Rite, Incorporated in the United States and/or other countries. CAPSURE is either a registered trademark or trademark of X-Rite Europe GmbH in the United States and/or other countries. PANTONE®, PantoneLIVE and other Pantone trademarks are the property of Pantone LLC. All other trademarks or registered trademarks are the property of their respective owners. Pantone is a wholly owned subsidiary of X-Rite, Incorporated. Licensed under Sun Chemical Corporation [Sun Chemical's patented technology enables the communication of a consistent, digital description of the desired appearance of a product] -U.S. Patent Nos. 7,034,960; 7,202,976; 7,268,918; 7,417,764 (and their foreign equivalents). Adobe and Creative Suite are either registered trademarks or trademarks of Adobe Systems Incorporated in the United States and/or other countries. All other trademarks or registered trademarks are the property of their respective owners. Pantone is a wholly owned subsidiary of X-Rite, Incorporated. © X-Rite, Inc. 2014. All rights reserved.

L7-521 EN (08/2014)