

Pulse™ ColorElite System

Professional Color Management Solution



The X-Rite Pulse ColorElite System is a complete solution that allows you, as the creative professional, to color manage all your devices: monitor, scanner, digital camera, and printer. This system provides the hardware to precisely capture color and the software to accurately analyze and interpret the data. It's what color management should be—a fast, flexible, simple solution that adapts to you, fits your space and exceeds your needs.



Create display profiles for CRT and LCD displays
Works with any monacoOPTIX family colorimeter (optional)



Create input profiles for your digital camera and scanner



Create output profiles for your printer



Modify and examine existing profiles with powerful profile tools



Pulse™ ColorElite System

As a creative professional, you know that the color harmony of your devices is critical to successful completion and delivery of your concepts. Scanners, printers, monitors, and even digital cameras reproduce color differently. There are even variances between printers of the same make and model. The Pulse ColorElite System now enables you to achieve consistent color throughout your work process, ensuring efficient and accurate results each and every time.

User Centered

With the Pulse ColorElite System, the user is in control. Pulse adapts to the user versus the user adapting to it. It allows you the flexibility to take measurements where you want and at the speed you need. Once the target has been measured you can return to your workstation for fast data upload in a few easy steps.

Accurate

All parts of the system work together to reduce errors and produce expert results. For example, by including unique encoded data in the targets, the Pulse system helps all but eliminate measurement errors, saving time and money.

Simple

Pulse ColorElite is powered by advanced profiling software, making the system both sophisticated and easy to use. The handheld scanner features one-touch activation. And the Pathfinder's alignment guide, calibration plaque, spot reader, and scanning speed strip are built in so there are no stray parts to misplace.

Distinctive Design

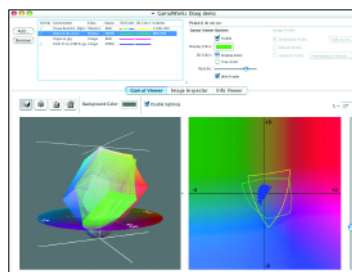
With its refined functionality and distinctive design, the Pulse ColorElite System is ahead of the competition in form and function. The components don't just work together; they are a well thought-out cohesive package.



Pulse ColorElite Software allows for simple, highly accurate profile creation and control for a wide range of devices, providing a flexible solution for complete color workflow control.



The latest updates to the profiling engine adhere to ICC 4.0 specifications for the highest quality profiles available.



Curve, global and selective color editing offer a robust set of features for controlling and editing profiles.

The X-Rite Pulse ColorElite System provides color validation across your work process to ensure highly accurate and reliable profiles. This allows you to color-correct workflow devices with ease. Included is a handheld spectrophotometer, an award-winning monitor calibrator, advanced color management software, the versatile Pathfinder™ hand-scanning guide and an innovative storage unit. It's a remarkably elegant solution designed to fit your needs, your space, and your work style.



Pulse Spectrophotometer

The Pulse spectrophotometer was developed through extensive hand and motion studies, resulting in a simple, ergonomic form that is user friendly and supports the way you work. It complements your grip and enables comfortable and active motion.

- The Pulse measurement device can be used while connected to a computer via USB or untethered for remote hand scanning or patch reading
- The Pulse can store up to 3000 patches and has enough on-board power for 10 measurements, ensuring capacity for large targets
- The integrated bar code is used as target indexing, allowing you to reduce read errors and increase usability
- Indicator light and sound provide immediate user feedback, ensuring accuracy and reliability

Pathfinder for Pulse

The Pathfinder is a 12-inch integrated hand scanning guide that allows you to easily align the Pulse against the intended targets. The optional backer board gives you a CGATS/ANSI-conforming surface for optimal results.

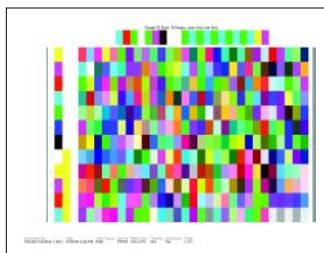
- Pathfinder protects your media, eliminating scratches and smearing of patches
- Alignment assistance, scanning feedback, calibration plaque and spot reading guide are integrated, reducing the opportunity to lose necessary components
- An optical sensor monitors the speed and direction of the scan to automatically compensate for the scan motion of the user. This reduces error and increases efficiency.

Pulse ColorElite Software

Powered by Monaco

The Pulse ColorElite Software is available in two versions. The Standard version has ICC profile-building capabilities for all your devices: monitor, scanner, RGB printer and digital camera. The Premier version additionally offers features for professionals who use a RIP for CMYK devices.

- Advanced profiling software
- Create a monitor profile to accurately display colors
- Create an input profile to accurately represent colors from your digital camera or scanner
- Create an output profile to accurately reproduce colors on your monitor or printer
- Ability to optimize the output profile for intended viewing conditions
- Contains all tools needed to control and maintain your color environments
- Output profile editor has expert controls using lightness, saturation and output curves
- Interfaces with all current X-Rite monitor calibrators for state-of-the-art monitor profiling
- User-selectable viewing conditions provide control of environmental variables for display profiles (D50 default)
- Adjust the customizable white point for greater display profile accuracy



monacoOPTIX^{XR2} Colorimeter

(Optional)

Our precision colorimeter is design to simulate the human eye. Hardware-assisted brightness and contrast adjustment ensures the widest tonal range and largest color gamut possible for your display.

- Glass cover over lens for accuracy and proportion provides a robust surface that is easy to clean and prevents scratching
- Creates ICC profiles for CRT and LCD panels
- Set hardware white points with measurement device
- Adaptive brightness setting for LCD displays provides accurate color in any viewing environment
- Profile reminder application can establish a profiling schedule for your entire workgroup
- Multiple monitor calibration calibrates multiple displays connected to the same workstation quickly and easily

True Color for Discriminating Professionals

With the Pulse ColorElite System, you can have full confidence in your color results. Consistent, reliable color quality requires accurate ICC profiles for your monitors, scanners, printers, and digital cameras. The Pulse system creates highly accurate profiles, allowing you to color-correct your workflow devices with ease.

Pulse™ ColorElite System Editions

	RGB	RGB/CMYK
Display profiles for CRT and LCD flat panels	•	•
Scanner profiles <i>IT8 target included</i>	•	•
Output profiles – RGB printers <i>343,729 patch sets</i>	•	•
Digital camera profiles <i>Support for popular digital camera targets</i>	•	•
Output profiles – CMYK printers <i>579,917 patch sets, ECI target</i>		•
Ink control <i>Total ink limiting, preset black curves</i>		•
Monaco GamutWorks <i>Rotating 3D display for viewing, comparing and analyzing color gamuts</i>	•	•
Profile editor	•	•

Components

Pulse CIE Precision Spectrophotometer
 Pathfinder Scan Guide
 USB cable
 Software disk (Mac/Win)
 Operation manual
 Quick Start sheet
 Desktop storage tray
 Scanner calibration target

Optional components

monacoOPTIX^{XR2} Display Colorimeter
Includes counterweight and CRT suction cup

Accessory Kit

Includes travel bag, 110-240 VAC rapid charging unit, spot guide, Pathfinder backer board (for easy alignment, faster, more accurate scanning, reduced read errors), and ColorShop™ X

Software

Macintosh®
*Power Macintosh or better
 OSX 10.2 or later
 Color monitor
 (with 24-bit display)
 100 MB free disk space
 USB port*

Windows®
*Pentium® PC or better
 Windows 2000 or XP
 Color monitor with
 24-bit display
 (with LUT support)
 100 MB free disk space
 USB port*

Power

Internal NiMH battery
*USB charged via powered
 USB port (rapid charge
 with optional accessory
 AC adapter)*
 Battery capacity:
approx. 10 profiles

Dimensions

Pulse Spectrophotometer
*Height: 6.1cm (2.4in)
 Width: 6.1cm (2.4in)
 Length: 13.2cm (5.2in)
 Weight: 258g (9.1oz)*

Pathfinder
*Height: 1.3cm (0.5in)
 Width: 32.7cm (12.9in)
 Length: 17.7cm (7.0in)*

Functional Performance Specifications

Measuring Geometry:
 0°/45° per ANSI / ISO 5.4

Measuring Aperture:
 3.2 mm diameter

Light Source:
 Gas pressure tungsten
 @ 2850°K

Spectral Sensor:
 New LIST Technology,
 16 point engine, 31 point reporting

Spectral Range:
 400nm - 700nm

Reflectance Range:
 0-160%R

Repeatability On White:
 0.2 DE 94 max.; ±0.01D max.

Inter-Instrument Agreement:
 <0.3 DE 94 average
 <0.6 DE 94 maximum

Scan Speed:
 < 2 seconds per 30 patch strip with Pathfinder, Integrated velocity feedback control system

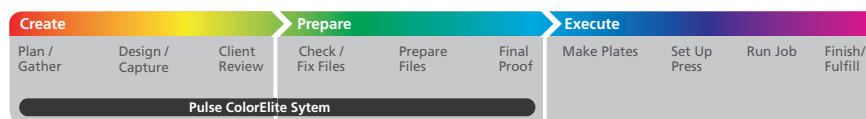
Optics Configurations:
 UV cut filter option (factory installed)

Environmental Operating Range:
 +10°C (50°F) to 35°C (104°F);
 30% to 85% RH (non-condensing)

This product is covered by US and foreign Patents and Patents Pending. Specifications and design subject to change without notice.

Streamlined Color Management™ – Graphic Arts Workflow by X-Rite

X-Rite delivers complete global color management systems, including instruments, software and support. Our solutions can help improve the entire workflow process from design to execution.



Visit xrite.com for more information