



# ColorShop™ X

Color Tools  
for Creative  
Professionals



## Color and Profile Analysis Tool

ColorShop X combines X-Rite's precision color and profile analysis software solutions into a single package. Whether you are a designer, digital photographer, or pre-press specialist, you can use ColorShop X to:

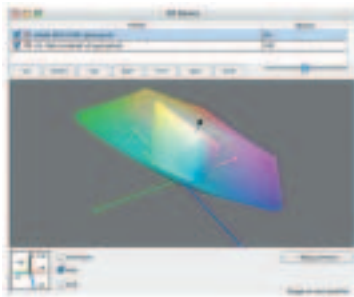
- acquire detailed color data (colorimetric or spectral)
- create & manage NCPs (named color profiles)
- access and manage color libraries including PANTONE®
- display instrument/profile data in X-Y chromaticity, 2D, 3D distribution, 3D gamut, Hex views and Gray balance
- examine profile results in nonprofile-aware applications using new Color Lens technology
- preview final color and help ensure printability before going to press

## Harness the Power of Color

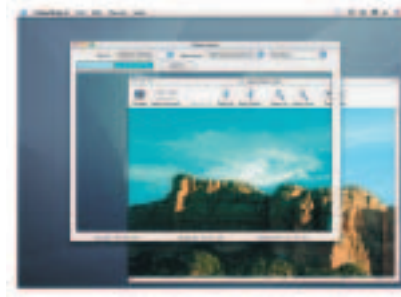
By utilizing colorimetric and spectral data, ColorShop X delivers the most accurate color information available. ColorShop X interfaces with X-Rite's most popular instruments, including the DTP41 Series II spectrophotometer and 500 Series, and 939 spectrodensitometers.

## Control Color from Computer Monitor to Final Output

ColorShop X is the core software technology for any creative professional. By adding X-Rite extensive color instrument support to ColorShop X, you can capture logos or other client-provided colors from real-world objects, and assure more accurate outputs by communicating detailed color data.



3D Gamut



Color Lens

## Features

### Gamut Viewer

Verify and compare the capabilities of two or more color devices using any ICC format profiles. Ensure that on-screen colors will reproduce on imaging devices before locking them in. Easily switch between X-Y chromaticity, 2D, 3D distribution, 3D gamut, Hex views and gray balance.

### Color Lens

Color-manage the content of any window in your operating system, even if the application is not profile aware.

### Profile Creation

Create specialty profiles including grayscale, rich gray and device link.

### Profile Editor

Edit ICC profiles with standard image editing tools previewing changes with a reference image and three dimensional gamut.

### Profile Calculator

Estimate CMYK, Gray, RGB, XYZ, Lab or HiFi builds of a spot or measured color based on a specific ICC device profile and rendering intent. Shows output simulation and Delta E shift. Convert colors to standard color spaces used in the graphic arts industry, objectively evaluate colors, and communicate color information to service providers.

### Match Quickly

Reference thousands of colors (including custom color named profiles and PANTONE® colors) without flipping through a fan deck.

### Delta E Calculator & Viewer

Evaluate two colors numerically and visually; change the background color to simulate drop-outs or colored papers.

### Color Tweener

Create new colors by blending two existing colors; quickly evaluate color combinations.

### Color Blender

Create new colors by blending two or more existing colors; quickly evaluate color combinations.

### Color Scratchpad

Describe a color using its spectral curve—the most precise and complete method of describing a color.

### Spectral Compare

Compare two colors both visually and numerically utilizing spectral data.

### Density Attributes

Calculate status density—Status T (U.S.), Status E (Europe) or Status A (photography)—from color samples. All four process color values are shown at once, as well as additional density calculations including dot area, print contrast, and hue error & grayness; making it easy to find the highest reading or to quickly assess gray balance.

## Macintosh System Requirements

- MAC G3 Processor or better
- 400 MHz or better
- 256 MB RAM
- System OS 10.2 and higher
- Any monitor with 24-bit display board
- 20 MB free disk space
- USB or USB to serial adapter for instrument connectivity

## Windows System Requirements

- Pentium III Processor or better
- 500 MHz or better
- 256 MB RAM
- Windows 2000 or XP
- Any monitor with 24-bit display board and 800 x 600 resolution
- 20 MB free disk space
- Serial port, USB port or USB to serial adapter for instrument connectivity



**X-RITE WORLD HEADQUARTERS**  
Grandville, Michigan USA  
(616) 534-7663  
(800) 248-9748  
FAX (616) 534-8960

**X-RITE LATIN AMERICA**  
Hollywood, Florida USA  
954-927-4979  
FAX 954-927-4979

**X-RITE LTD.**  
Poynton, Cheshire  
United Kingdom  
44 (0) 1625 871100  
FAX 44 (0) 1625 871444

**X-RITE MÉDITERRANÉE**  
Massy, France  
33 1-6953-6620  
FAX 33 1-6953-0052

**X-RITE ITALY S.R.L.**  
Origgio (VA), Italy  
(39) 02-967-34266  
FAX (39) 02-967-30681

**X-RITE GMBH**  
Köln, Germany  
(49) 2203-91450  
FAX (49) 2203-914519

**X-RITE INTERNATIONAL  
TRADING LIMITED**  
Shanghai, PR China  
86-21-6427-2426  
FAX 86-21-6427-5816

**Yskov, Czech Republic**  
(00) 420 517-320-331  
FAX (00) 420 517-320-335

**X-RITE ASIA PACIFIC LTD.**  
Quarry Bay, Hong Kong  
(852) 2-568-6283  
FAX (852) 2-885-8610

**X-RITE K.K.**  
Tokyo, Japan  
81-3-5439-5971  
FAX 81-3-5439-5972

INFORMATION PROVIDED IN THIS DOCUMENT IS PROVIDED "AS IS" WITHOUT WARRANTY OF ANY KIND, EITHER EXPRESSED OR IMPLIED, INCLUDING BUT NOT LIMITED TO THE IMPLIED WARRANTIES OF MERCHANTABILITY AND/OR FITNESS FOR A PARTICULAR PURPOSE. The user assumes the entire risk as to the accuracy and the use of this information. All text must be copied without modification and all pages

must be included. All components of this information must be distributed together. This information may not be distributed for profit. © X-Rite, Incorporated 2003. X-Rite® is a registered trademark of X-Rite, Incorporated. Other brand and product names are trademarks of their respective holders. All trademarks may be registered in the United States and /or other countries. Product design and specifications subject to change without notice.